

Distributed by



**HIKVISION**



## OBSERVE THE WORLD IN A DIFFERENT WAY **HIKVISION THERMAL CAMERAS**

All objects with a temperature above absolute zero emit thermal radiation, even at low levels. This kind of radiation, invisible to the human eye, can be detected by thermal camera sensors. The warmer an object is, the more thermal radiation it will emit. Thermal cameras can render images in the visual spectrum by detecting temperature differences between an object and its surroundings. The larger the difference, the bigger the contrast variety, making details visible. Compared to visible-light cameras, thermal cameras can be used for applications in more challenging environments.

## KEY FEATURES



### Excellent Environmental Adaptability

Thermal sensors are not affected by changing light conditions, total darkness, or other challenging weather, such as rain, fog or snow. This makes thermal cameras a perfect platform on which to build more efficient, 24/7 surveillance systems.



### Advanced Detection Ability

Integrated with intelligent video applications, such as line crossing and intrusion detection, these cameras can automatically trigger an alert and at the same time trigger a traditional pan / tilt / zoom camera to supply pertinent video to an operator. This application becomes especially effective in theft prevention and border enforcement applications.

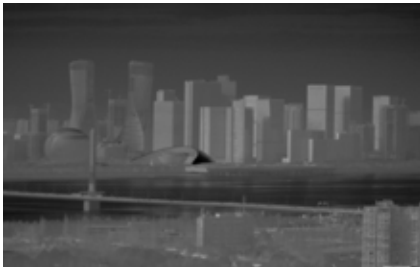
### Temperature Sensing

Thermal cameras can monitor temperatures of specified objects; if temperatures exceed or fall below a certain limit, an alarm will be triggered. They can also track highlighted temperature-spans in an image through isothermal palettes. This enables an interpretation of events in a scene. Thermal cameras are the ideal choice for the prevention of fires, equipment overheating, damage caused by freezing, and many other hazards.

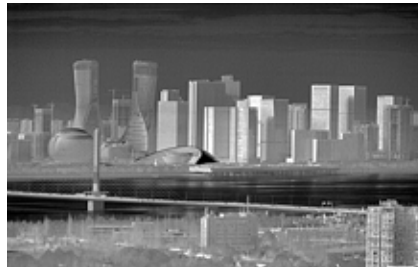


# Hikvision's Thermal Technology Advantages

## Image Signal Proces Algorithm



Linear AGC



Adaptive AGC

### Auto Gain Control (AGC):

Adjusts the dynamic range of an image & retains permeability. "Adaptive" AGC – a feature of Hikvision thermal cameras – is a more advanced algorithm than "linear" AGC, found in other manufacturers' cameras.



DDE Off



DDE On

### Digital Detail Enhancement (DDE):

Based on an enhanced algorithm for a region of interest, ensures images display more details.



3D DNR Off



3D DNR On

### 3D Digital Noise Reduction (DNR):

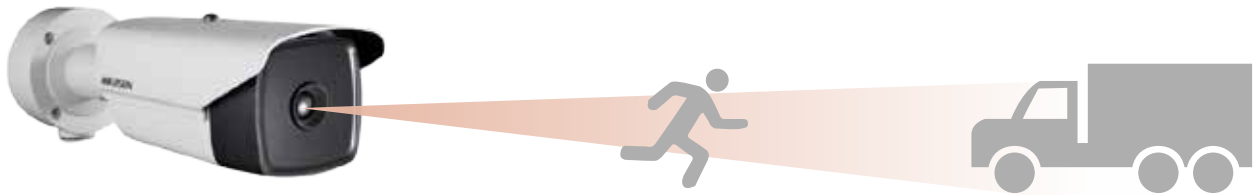
Through noise reduction processing of the original signal, hot pixels are minimized, rendering more refined images.

## Wide Coverage Range for Any Application

Pixel Pitch = 25  $\mu$ m

Lens (Focus)	25 mm	50 mm	75 mm
Detection Range (Vehicle)	1,500 m	3,060 m	4,600 m
Detection Range (Human)	500 m	1,000 m	1,500 m
Recognition Range (Vehicle)	380 m	760 m	1,150 m
Recognition Range (Human)	120 m	250 m	370 m
Identification Range (Vehicle)	190 m	380 m	570 m
Identification Range (Human)	60 m	120 m	180 m

Applicable Models: DS-2TD2235D-25/50; DS-2TD4035D-25/50; DS-2TD6135-50B2L/75B2L; DS-2TD6135T-25A2L/50A2L



Pixel Pitch=17 $\mu$ m

Lens (focal length)	10 mm	15 mm	25 mm	35 mm	50 mm	75 mm
Detection range (Vehicles)	900 m	1,350 m	2,250 m	3,150 m	4,510 m	6,760 m
Detection range (Humans)	290 m	440 m	730 m	1,020 m	1,470 m	2,200 m
Recognition range (Vehicles)	220 m	330 m	560 m	780 m	1,127 m	1,691 m
Recognition range (Humans)	70 m	110 m	180 m	250 m	360 m	550 m
Identification range (Vehicles)	110 m	160 m	280 m	390 m	560 m	840 m
Identification range (Humans)	30 m	50 m	90 m	120 m	180 m	270 m

Applicable Models: DS-2TD2136-10/15/25; DS-2TD2166 (T) -15/25/35; DS-2TD6166-50B2L/75B2L; DS-2TD6166T-25A2L/50A2L

Ranges are calculated according to Johnson's criteria in good weather conditions

## A Complete Range of Thermal Products

Combining self-developed thermal imaging technology with Hikvision's extensive experience in the video surveillance field, we are equipped to provide a full range of thermal products – all of which are able to meet our customers' various requirements.

The single-lens bullet cameras provide an economical total cost of ownership, and the dual-lens products – bullet cameras, speed domes, and positioning systems – offer pan & tilt flexibility and simultaneous video streams that include both visible light and thermal imaging.



Thus, complex functions can be achieved. For example, bi-spectrum linkage can trigger automatic optical tracking if thermal units detect a target, and the fire detection function can locate fires and auto-matically zoom in with a traditional camera for visible confirmation.

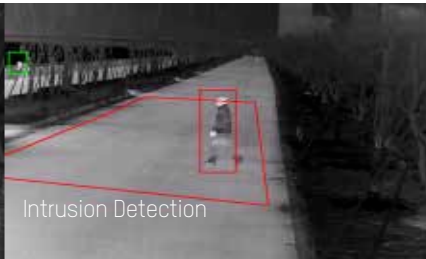
To meet accurate temperature-measuring requirements, we created thermometric bullet & PTZ cameras, which support point, line, and frame temperature measurement types. Users can set upper and lower temperature limits. When the temperature exceeds set limits, an alarm will be triggered.

We have also introduced handheld thermal devices for industrial testing or outdoor activities. It's easy to carry and records precise measurements.

# Applications



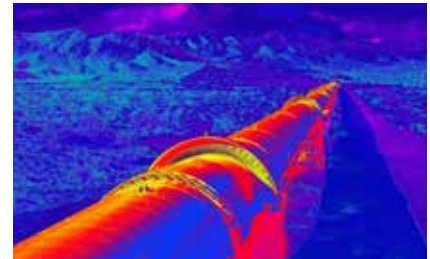
Line Crossing Detection



Intrusion Detection

## Perimeter Protection (Key-Region Intelligent Preventions)

Rapid target lock and alarm triggering, even in complete darkness and challenging conditions such as rain, smoke, dust and snow



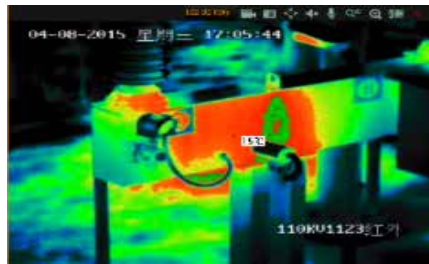
## Protection of Borders & Coastlines

Long-range object detection, not influenced by weather conditions



## Fire & Theft Prevention in Warehouse Settings

Thermal cameras can detect temperature anomalies of a starting fire before the smoke is detected by a conventional fire detector. Even in low contrast situations the thermal cameras can detect humans in a very early stage.



## Thermometry to Avoid Damage

The thermometry inside the camera can help you detect temperature deviations in an early stage to prevent damage due to overheating.



## Reference Install

### Electric temperature monitoring in energy substation – Ecuador



A total of 60 cameras were installed, providing dedicated client use for temperature measurement and monitoring, and running on a third-party grid platform.

This system implements preventive detection of operating events and monitors the main parts of the substation, such as insulators, transformers, and more. Once a device is found to exceed the normal operating temperature, alarm information is generated.

### Coastal defense project – Chao Zhou, China



Surveillance of seafaring vessels to prevent smuggling or other violations in ocean environments is especially tough. Hikvision Thermal PTZ Cameras solve this problem, providing security personnel with sharp imaging and smart functionality.



**PRODUCT FEATURES**



Handheld  
Thermometric Thermal  
Camera  
**DS-2TP03-113V/W**

- Thermal resolution: 384 × 288 / 17 μm
- Visible resolution: 8 MP
- 15 mm (25°) thermal lens
- 3.5" touch screen
- -20° C – 550° C (-4° F – 1,022° F) temperature range
- Max. ± 2° C, ± 2% temperature accuracy
- 64 GB SD card
- >4 hours operating time on single charge
- IP66 Protection rating



Handheld  
Observational Thermal  
Camera  
**DS-2TS03-068U/W**  
**DS-2TS03-049U/W**

- Thermal resolution: 384 × 288 / 17 μm
- 25 mm (15°) or 35 mm (10°) thermal lens option
- 0.39" OLED, 1024 × 768
- 32 GB MicroSD card
- Hot-spot tracking
- Support Wi-Fi
- >5 hours operating time on single charge
- IP67 Protection rating
- 2 m Drop tested



Thermal Network  
Single-Lens Bullet  
Camera  
**DS-2TD2136-10/15/25**

- Thermal resolution: 384 × 288
- 10 mm (36°) / 15 mm (24°) / 25 mm (15°) thermal lens option
- Support line crossing and intrusion detection
- Support temperature anomaly alarm
- Support fire detection



Thermal Network  
Single-Lens Bullet  
Camera  
**DS-2TD2166-15/25/35**  
**DS-2TD2166T-15/25/35**

- Thermal resolution: 640 × 512
- 15 mm (39°) / 25 mm (24°) / 35 mm (17°) thermal lens option
- Support line crossing and intrusion detection
- Support temperature anomaly alarm
- Support fire detection
- -T: -20° C – 550° C (-4° F – 1,022° F) temperature range, max. ± 2° C, ± 2% temperature accuracy (only DS-2TD2166T supported)
- IP66 Protection rating

**PRODUCT FEATURES**



Observable Thermal + Optical  
Bi-spectrum Network  
PTZ Camera  
**DS-2TD6135-50/75B2L**  
**DS-2TD6166-50/75B2L**

- Thermal resolution: 384 × 288 / 640 × 512  
Visible resolution: 1920 × 1080
- Visible-light lens: 8-250 mm, 32x optical zoom, 16x digital zoom
- Thermal lens: 50 mm (6135: 11°, 6166: 12.4°) / 75 mm (6135: 7.3°, 6166: 8.3°) thermal lens option
- 360° Endless pan range, +40° to -90° tilt range
- Support line crossing and intrusion detection with smart tracking linkage
- Support temperature anomaly alarm
- Support fire detection
- Up to 500 m IR distance
- IP66 Protection rating



Thermometric Thermal + Optical  
Bi-spectrum Network  
PTZ Camera  
**DS-2TD6135T-25/50A2L**  
**DS-2TD6166T-25/50A2L**

- Thermal resolution: 384 × 288 / 640 × 512  
Visible resolution: 1920 × 1080
- Visible-light lens: 4.5-135 mm, 30x optical zoom, 16x digital zoom
- Thermal lens: 25 mm (6135T: 21°, 6166T: 24°) / 50 mm (6135T: 11°, 6166T: 12.4°) thermal lens option
- 360° Endless pan range, +40° to -90° tilt range
- -20° C – 550° C (-4° F – 1,022° F) temperature range, max. ± 2° C, ± 2% temperature accuracy
- Support line crossing and intrusion detection with smart tracking linkage
- Support fire detection
- Up to 150 m IR distance
- IP66 Protection rating



Thermal + Optical Bi-spectrum  
Network Speed Dome  
Camera  
**DS-2TD4035D-25/50**

- Thermal resolution: 384 × 288  
Visible resolution: 1920 × 1080
- Visible-light lens: 4.3-129 mm, 30x optical zoom, 16x digital zoom
- Thermal lens: 25 mm (21.7°) / 50 mm (11°) thermal lens option
- 360° Endless pan range, -15° to 90° tilt range
- Support line crossing and intrusion, which can be linked to auto tracking
- Support temperature anomaly alarm
- Support fire detection
- Up to 150 m IR distance
- IP66 Protection rating



Thermal + Optical Bi-spectrum Network  
Bullet Camera  
**DS-2TD2235D-25/50**

- Thermal resolution: 384 × 288  
Visible resolution: 1920 × 1080
- Visible-light lens: Darkfighter Ultra low light
- Thermal lens: 25 mm (21.7°) / 50 mm (11°) thermal lens option
- Support line crossing and intrusion
- Support temperature anomaly alarm
- Support fire detection
- Up to 120 m IR distance
- IP66 Protection rating



